



# GHOST/CATERING KITCHEN

518 Grand Boulevard, Kansas City, Missouri



## Lease Rate: \$5,000/Month NNN | 3,600 SF Building

### DEMOGRAPHICS

	1 mile	3 miles	5 miles
Estimated Population	17,140	81,410	231,776
Avg. Household Income	\$94,546	\$77,041	\$77,163

- Fully furnished and equipped ghost and catering kitchen
- All F,F, and E included
- Freestanding building
- On-site parking
- [View 3,600 SF Kitchen Space - 360° Tour](#)



CLICK HERE TO VIEW MORE  
LISTING INFORMATION

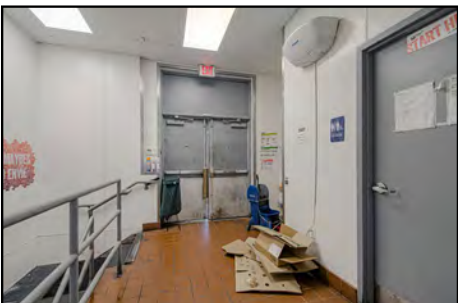
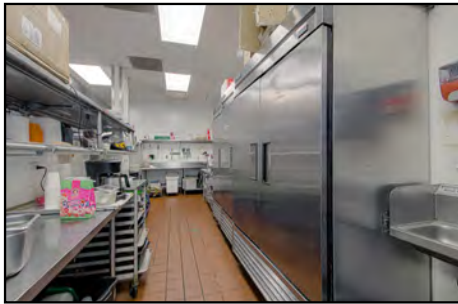
For More Information Contact:

MARSHAL BLOUNT | 816.806.9445 | [mblount@blockandco.com](mailto:mblount@blockandco.com)

Exclusive Agent



## PHOTOS



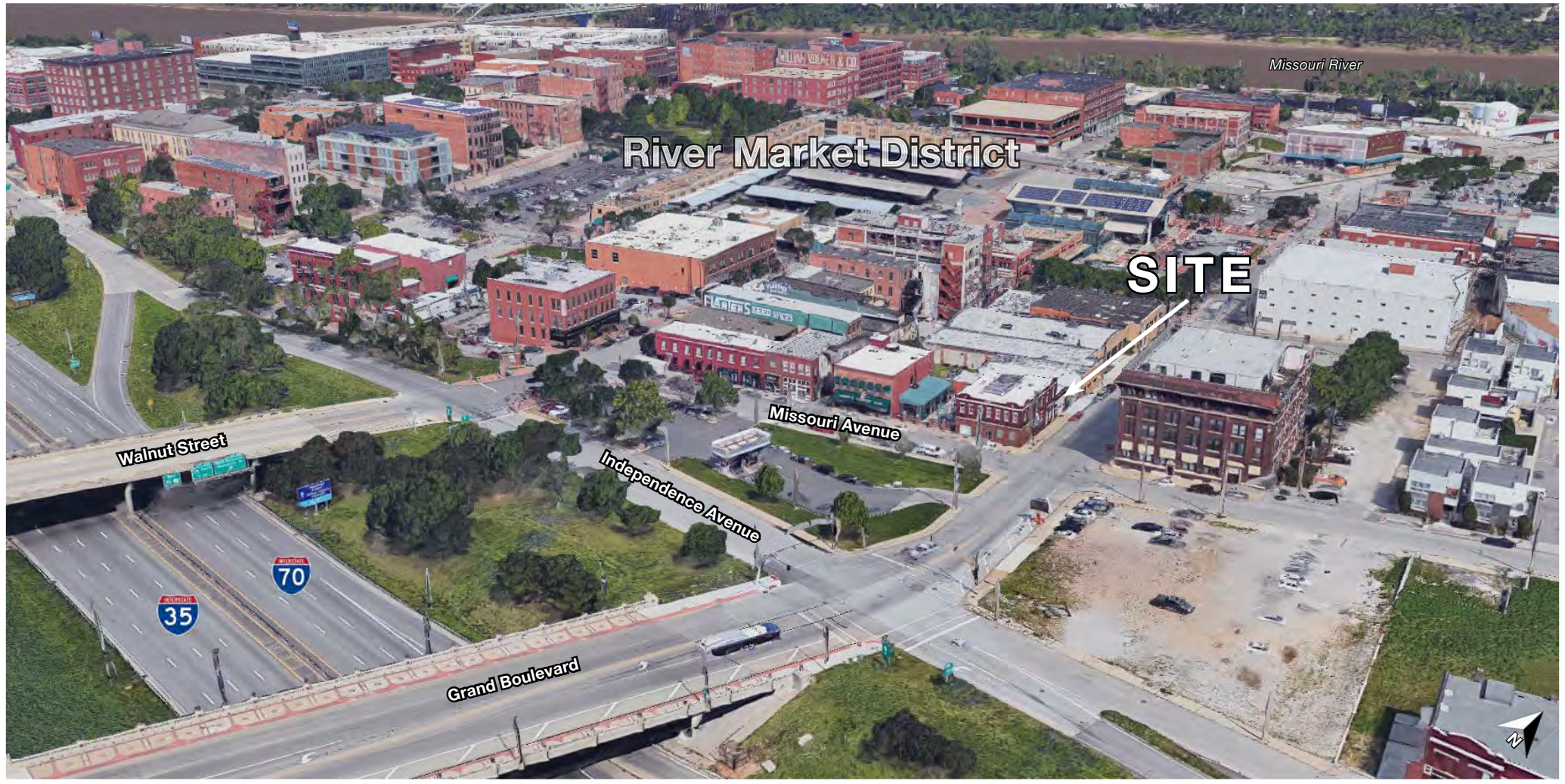




# GHOST/CATERING KITCHEN

518 Grand Boulevard, Kansas City, Missouri

AERIAL



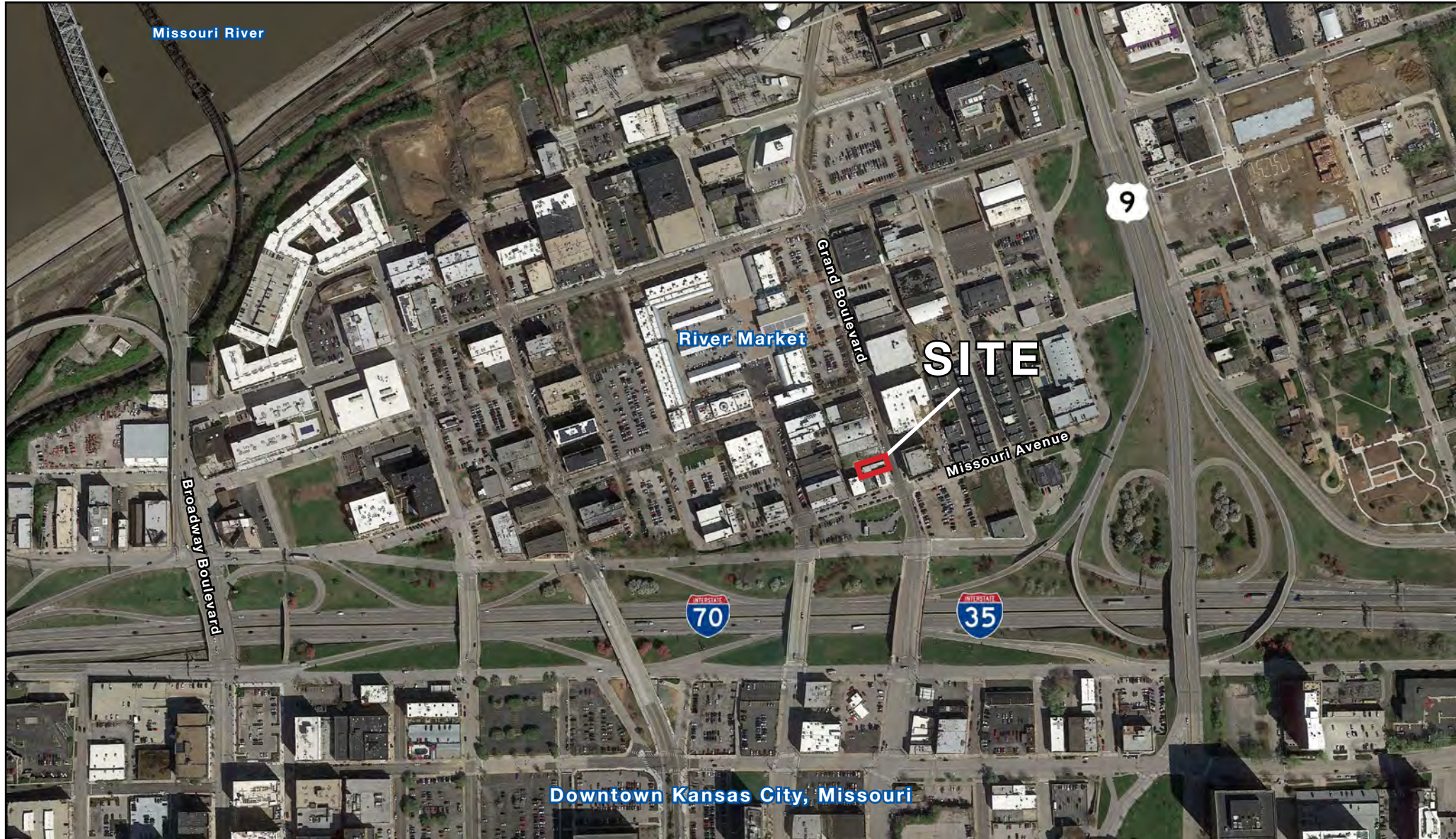




# GHOST/CATERING KITCHEN

518 Grand Boulevard, Kansas City, Missouri

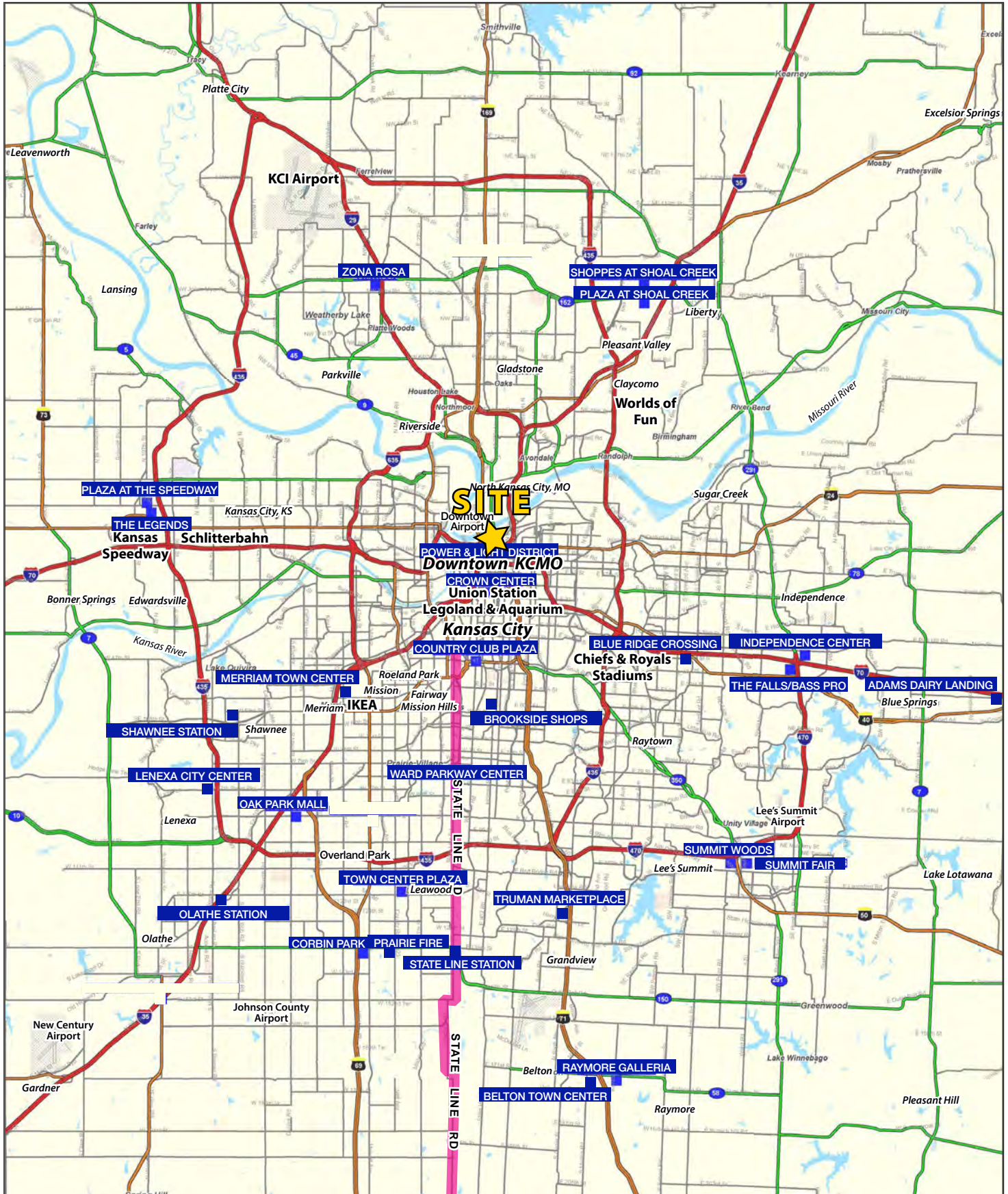
AERIAL





# GHOST/CATERING KITCHEN

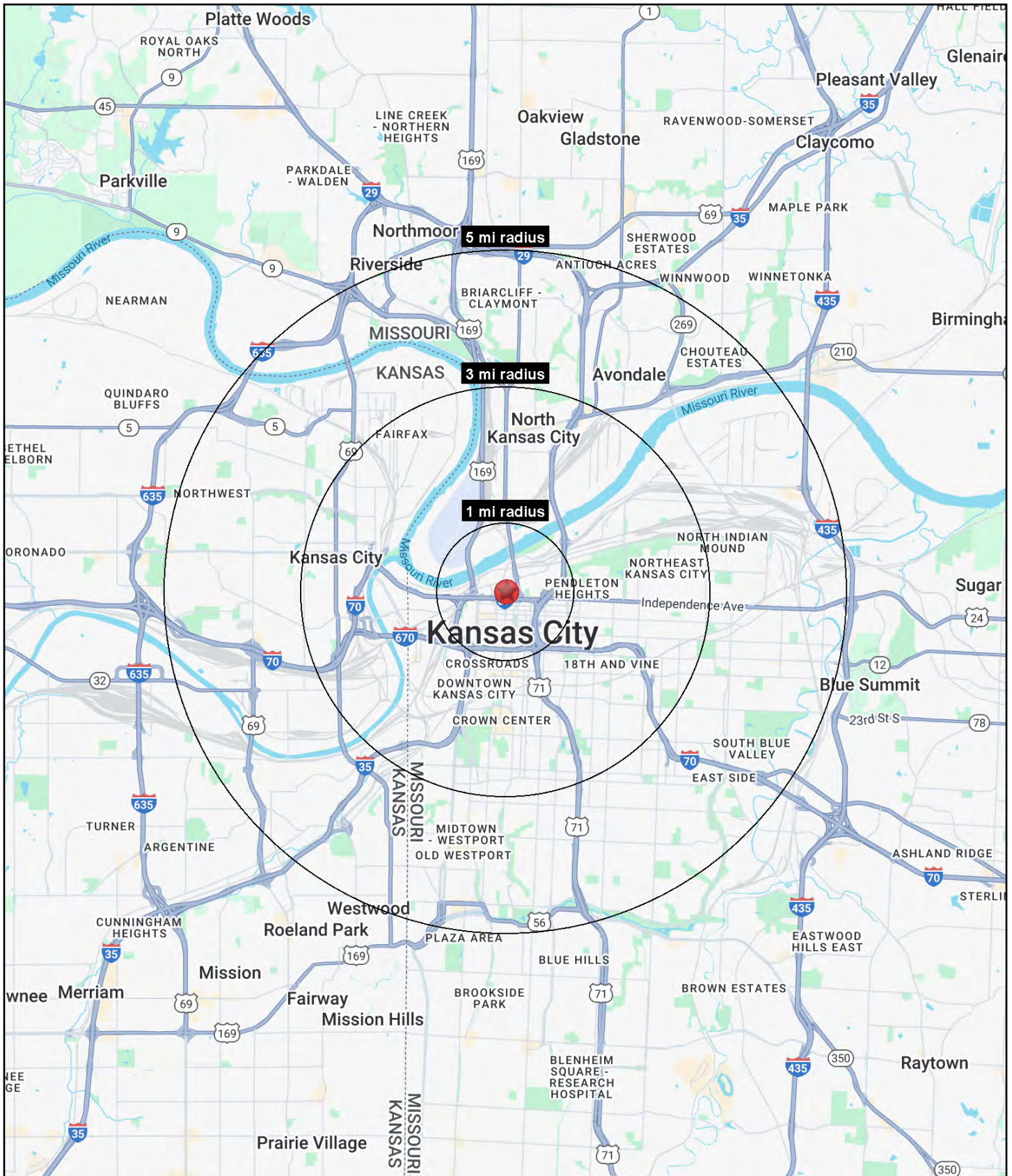
518 Grand Boulevard, Kansas City, Missouri





# GHOST/CATERING KITCHEN

518 Grand Boulevard, Kansas City, Missouri





# GHOST/CATERING KITCHEN

## 518 Grand Boulevard, Kansas City, Missouri

518 Grand Boulevard Kansas City, MO 64106	1 mi radius	3 mi radius	5 mi radius
<b>Population</b>			
2024 Estimated Population	17,140	81,410	231,776
2029 Projected Population	18,262	84,954	234,270
2020 Census Population	16,099	75,835	219,824
2010 Census Population	10,227	65,577	206,921
Projected Annual Growth 2024 to 2029	1.3%	0.9%	0.2%
Historical Annual Growth 2010 to 2024	4.8%	1.7%	0.9%
2024 Median Age	31.2	32.4	32.6
<b>Households</b>			
2024 Estimated Households	10,668	38,158	103,053
2029 Projected Households	11,485	40,575	105,462
2020 Census Households	9,872	34,028	94,880
2010 Census Households	5,281	27,330	86,535
Projected Annual Growth 2024 to 2029	1.5%	1.3%	0.5%
Historical Annual Growth 2010 to 2024	7.3%	2.8%	1.4%
<b>Race and Ethnicity</b>			
2024 Estimated White	67.0%	46.2%	45.1%
2024 Estimated Black or African American	17.5%	28.2%	26.8%
2024 Estimated Asian or Pacific Islander	5.6%	5.3%	4.6%
2024 Estimated American Indian or Native Alaskan	0.5%	0.8%	0.8%
2024 Estimated Other Races	9.4%	19.5%	22.7%
2024 Estimated Hispanic	9.8%	22.0%	25.9%
<b>Income</b>			
2024 Estimated Average Household Income	\$94,546	\$77,041	\$77,163
2024 Estimated Median Household Income	\$73,611	\$56,981	\$57,961
2024 Estimated Per Capita Income	\$59,101	\$36,437	\$34,485
<b>Education (Age 25+)</b>			
2024 Estimated Elementary (Grade Level 0 to 8)	2.3%	7.1%	7.3%
2024 Estimated Some High School (Grade Level 9 to 11)	3.2%	7.3%	8.0%
2024 Estimated High School Graduate	15.4%	24.2%	26.6%
2024 Estimated Some College	15.9%	19.1%	18.4%
2024 Estimated Associates Degree Only	5.0%	6.4%	6.8%
2024 Estimated Bachelors Degree Only	38.0%	22.4%	20.4%
2024 Estimated Graduate Degree	20.1%	13.6%	12.5%
<b>Business</b>			
2024 Estimated Total Businesses	2,238	7,910	14,310
2024 Estimated Total Employees	33,681	120,340	200,771
2024 Estimated Employee Population per Business	15.0	15.2	14.0
2024 Estimated Residential Population per Business	7.7	10.3	16.2

©2025, Sites USA, Chandler, Arizona, 480-491-1112 Demographic Source: Applied Geographic Solutions 11/2024, TIGER Geography - RS1